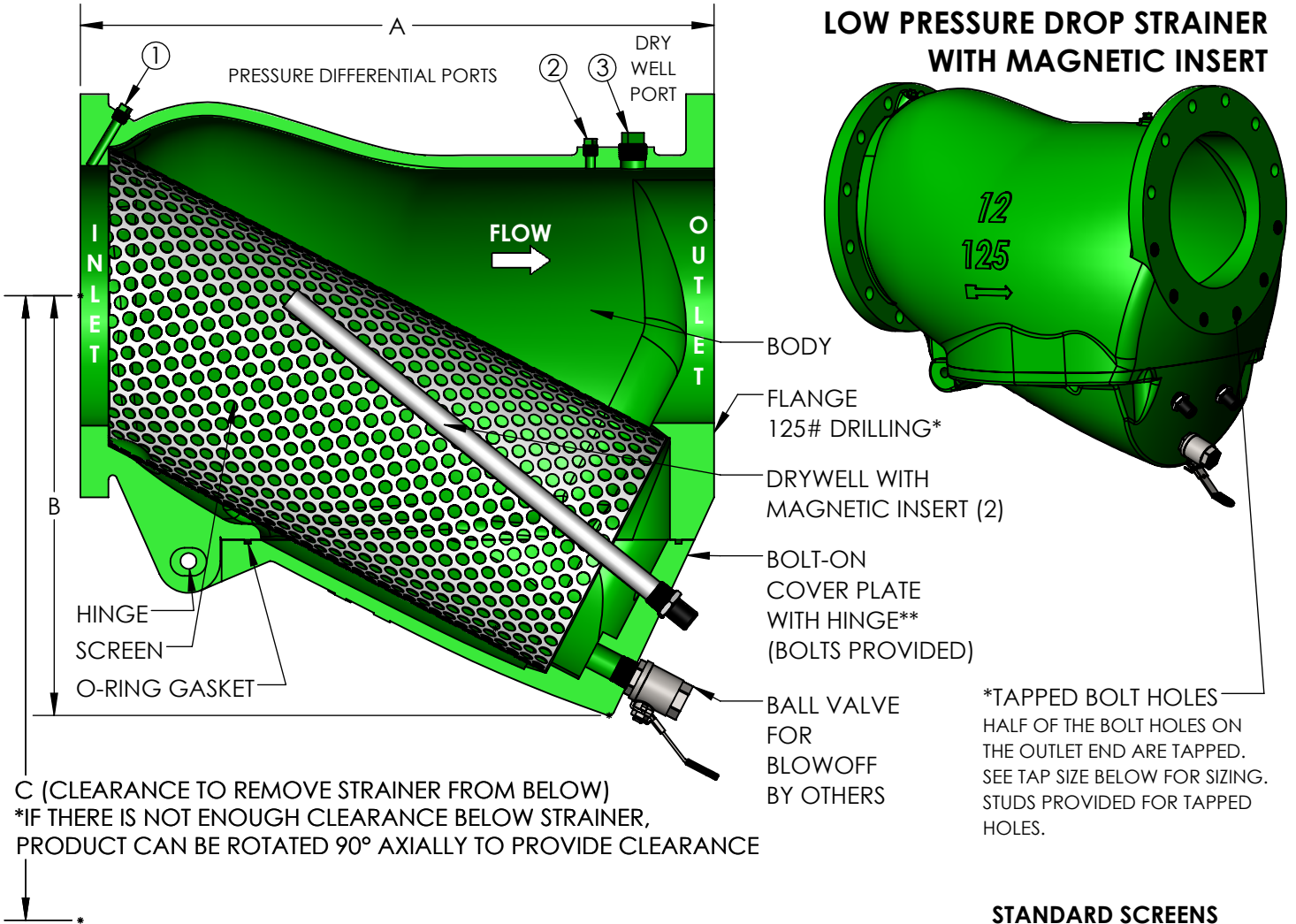


# MODEL LPD-MAG 10" & 12" LOW PRESSURE DROP STRAINER WITH MAGNETIC INSERT



\*TAPPED BOLT HOLES  
HALF OF THE BOLT HOLES ON THE OUTLET END ARE TAPPED. SEE TAP SIZE BELOW FOR SIZING. STUDS PROVIDED FOR TAPPED HOLES.

### STANDARD SCREENS

SERVICE	SIZE	PERF
LIQUID	10" - 12"	.125"

### MATERIALS OF CONSTRUCTION

BODY, FLANGES, COVER - CAST IRON  
 SCREEN - 304 STAINLESS STEEL  
 O-RING GASKET - VITON  
 DRYWELL - 304 STAINLESS STEEL  
 MAGNETS - NEODYMIUM

### OPERATING TEMPERATURE/PRESSURE

WATER, OIL, GAS.....175 PSI @ 150°F  
 MAXIMUM OPERATING TEMPERATURE: 212°F

QTY	PART NUMBER	PIPE SIZE		A	B	C	#Cv (GPM)	SCREEN AREA (in <sup>2</sup> )	PORT SIZE (NPT)		BLOWOFF SIZE (NPT)	TAP SIZE (UNC)	TAP DEPTH	WEIGHT (LBS)
		INCH	MM						1 & 2	3				
	LPDMAG1000	10"	250	27"	16-5/8"	37-7/8"	2424	745.2	3/8"	1"	2"	7/8"-9	1-1/8"	464
	LPDMAG1200	12"	300	29-7/8"	19-3/4"	43-5/8"	3200	1035.1	3/8"	1"	2"	7/8"-9	1-1/8"	565

#Cv IS THE FLOW RATE IN GALLONS OF 60°F WATER THAT WILL PASS THROUGH THE STRAINER IN 1 MINUTE AT A 1 PSI PRESSURE DROP.

### NSF 372 - LEAD FREE

The wetted surface of this product contacted by consumable water contains less than one quarter of one percent (0.25%) of lead by weight. Material complies with state codes and standards, where applicable, requiring reduced lead content. Not suitable for potable water systems due to materials of construction.

\*\*MAGNETS AND DRYWELLS MUST BE REMOVED BEFORE THE COVER CAN BE OPENED.

CUSTOMER: \_\_\_\_\_

PROJECT: \_\_\_\_\_

ENGINEER: \_\_\_\_\_

REV.	1	C DIM, AND HINGE AND STUD CALLOUTS ADDED	DATE 7/7/2022
		2323 W. HUBBARD ST. CHICAGO, IL 60612 TEL: 312-738-3800 FAX: 312-738-0415 WWW.METRAFLEX.COM	
<b>MODEL LPD-MAG 10" &amp; 12"</b> LPD STRAINER WITH MAGNETIC INSERT			
DRAWN BY: DKISH		DATE: 10/1/2021	
APPROVED: JC		DATE: 10/1/2021	
SCALE: NTS	DRAWING NUMBER: LPDMAG-10AND12		