

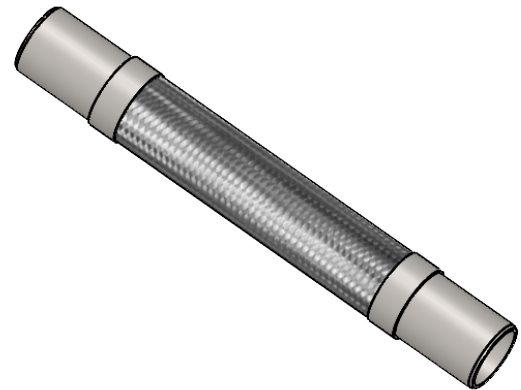
Note: Do not use wrenches on hose or braid collar.

Qty	Model	Size I.D. (in)	A (in)	Pressure @ 70°F (PSI)	Weight (Lbs)	Project Info
	GASSW0050	1/2	16-7/8	150	0.8	
	GASSW0075	3/4	18-3/8	150	1.4	
	GASSW0100	1	19-3/8	150	1.8	
	GASSW0125	1-1/4	19-3/8	150	2.3	
	GASSW0150	1-1/2	20-1/8	150	2.9	
	GASSW0200	2	20-7/8	150	3.9	
	GASSW0250	2-1/2	22-1/2	150	5.7	
	GASSW0300	3	25-5/8	150	8.1	
	GASSW0400	4	30-1/4	150	11.9	

MAX INTERMITTENT OFFSET FROM CENTERLINE: 2"
CONTACT METRAFLEX FOR CUSTOM LENGTHS.

LEAD FREE

The wetted surface of this product contacted by consumable water contains less than one quarter of one percent (0.25%) of lead by weight. Material complies with state codes and standards, where applicable, requiring reduced lead content.



CUSTOMER: _____

PROJECT: _____

ENGINEER: _____

REV.	DATE
2323 W. HUBBARD ST. CHICAGO, IL 60612 TEL: 312-738-3800 FAX: 312-738-0415 WWW.METRAFLEX.COM	
MODEL GASSW FLEXIBLE CONNECTOR FOR GAS SERVICE	
DRAWN BY: DEVINR	DATE: 05/15/2024
APPROVED:	DATE:
SCALE: NONE	DRAWING NUMBER: GASSW