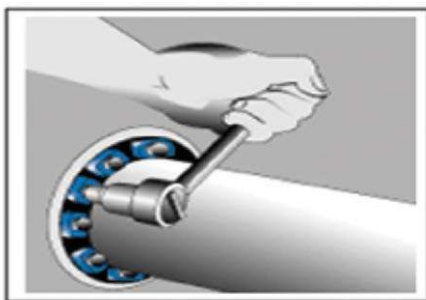
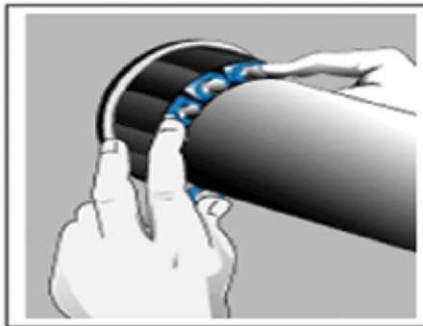
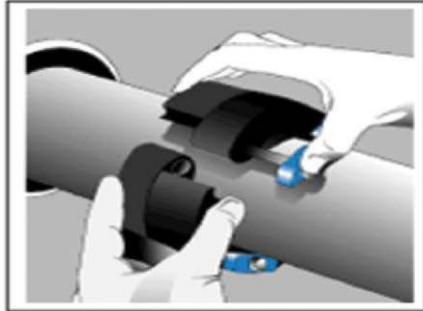
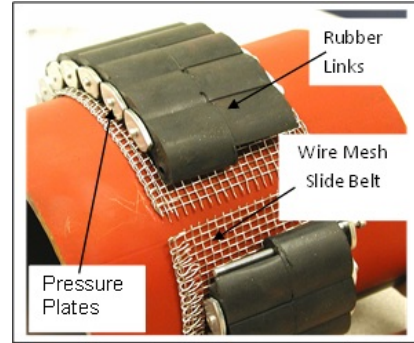


# Sliding MetraSeal™ OPERATION, INSTALLATION AND MAINTENANCE INSTRUCTIONS

## OPERATION:

The Sliding MetraSeal™ can be installed in concrete walls, floors, or ceilings with a minimum thickness of 4-1/2". This unique design permits unlimited axial pipe movement. The surface of the pipe over the length of the area that will slide through the seal must be in an "as supplied from the factory" condition. Remove any weld splatter, or protrusions. Pipe insulation may be butted directly up to the installed seal assembly.




## INSTALLATION:

1. Center the metallic pipe, copper tube, and/or conduit in the penetration hole. Wrap the wire mesh slide belt around the pipe. The wire mesh slide belt ends should butt up against each other without overlapping.
2. Confirm that the curve of the rubber links, and if curved, the curve of the pressure plates is in the same direction as the curve of the pipe.
3. Center and wrap the Sliding MetraSeal™ links over the wire mesh slide belt and the pipe. The wire mesh slide belt is slightly wider than the Sliding MetraSeal™ and both hems of the slide belt should be visible outside the Sliding MetraSeal™.
4. Connect the two ends of the rubber links. The wire mesh slide belt should extend 3/8" to 1/2" outside the rubber link of the Slidin MetraSeal™.
5. Slide the entire assembly into the space between the pipe and the hole.
  - a. For floor/ceiling applications, the Sliding MetraSeal™ assembly must be recessed 1/2" on the ceiling side.
  - b. For wall applications, center the Sliding MetraSeal™ assembly in the penetration.
6. Sequentially tighten the bolts in a clockwise or counterclockwise direction. (Do not cross tighten the Sliding MetraSeal™). Tighten each bolt 2 to 3 turns; making at least 5 to 9 passes completely around the pipe, until the seal is firmly in place. This will ensure uniform expansion of each rubber link.
7. RISER PIPE GUIDING APPLICATIONS:
  - a. Sliding MetraSeal™ pipe guides must be used with a Metraflex expansion joint or HP compensator to ensure EJMA pipe guide stability requirements are met.
  - b. For 1-1/4" to 4" diameter pipe, install 1 sliding seal in the floor above and 1 in the floor below the expansion joint.
  - c. For 5" to 10" diameter pipe, 4 sliding seals are required. Install 1 for each of the 2 floors above and below the expansion joint.
  - d. For pipe diameters below 1-1/4" and above 10", consult factory or manufacturer's rep.

**MAINTENANCE:** None Required

Copyright The Metraflex Co.® June 2 2002

CUSTOMER _____		
PROJECT _____		
ENGINEER _____		
ARCHITECT _____		
PRO. OR P.O. NO. _____	DESCRIPTION: <b>Sliding MetraSeal</b> Operation, Installation & Maintenance Instructions	DRAWING NO. SEAL SLIDE -OIM
	DRAWING BY: JT	DATE: 07-16-15

